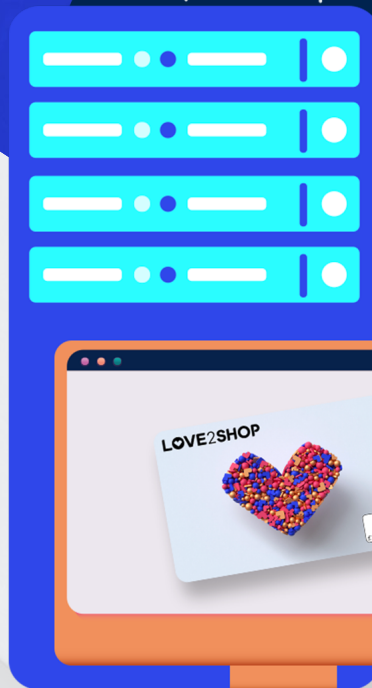
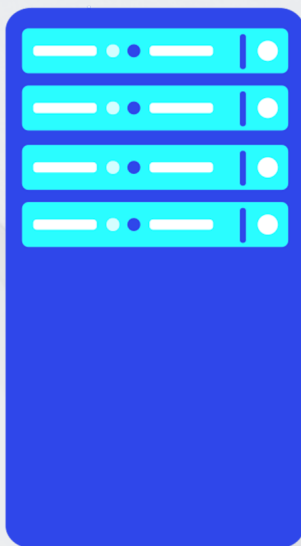


LOVE2SHOP



Plug and play
with the
Love2shop API

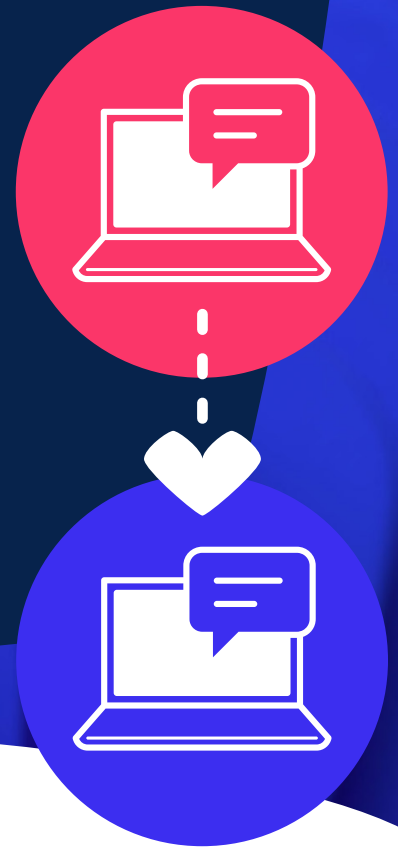


Understanding API

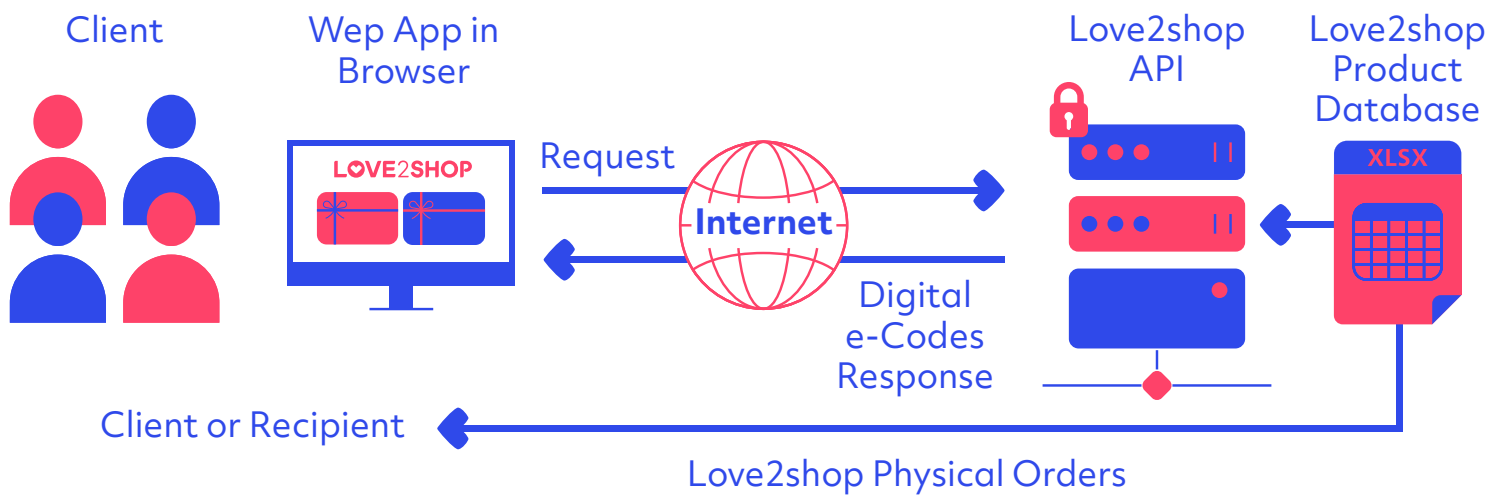
What it is:

An Application Programming Interface (API) is simply software that enables two applications to talk to each other.

In this instance it means your business can connect to Love2shop and access reward products in real-time.



How it works:



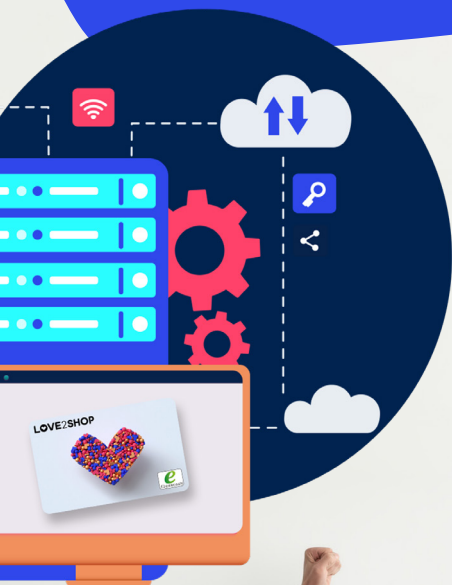
What does the Love2shop API deliver

- Order physical or digital rewards via API and the fulfilment process starts immediately
- Effortless real-time Love2shop integration
- Built-in automated authentication and verification processes



The Benefits of using API

- Order and receive digital rewards in real-time. Our digital e-Codes can be delivered to you in a moment to distribute to your recipients, whilst physical products will be dispatched the following working day.
- More efficient with no spreadsheet dependency.
- Process is less manual, creating automation and therefore improved safety.
- Enhanced customer experience, with secure and quick transactions.
- No monthly license fee, no cost per transaction - there is no charge for using our API platform, you simply pay for the gift card products ordered via API.
- Organisations can be set up and ready to start ordering in a matter of days.



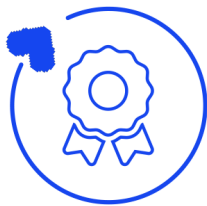
How Love2shop's API can help you



Increase sales



Retain customers



Reward loyalty

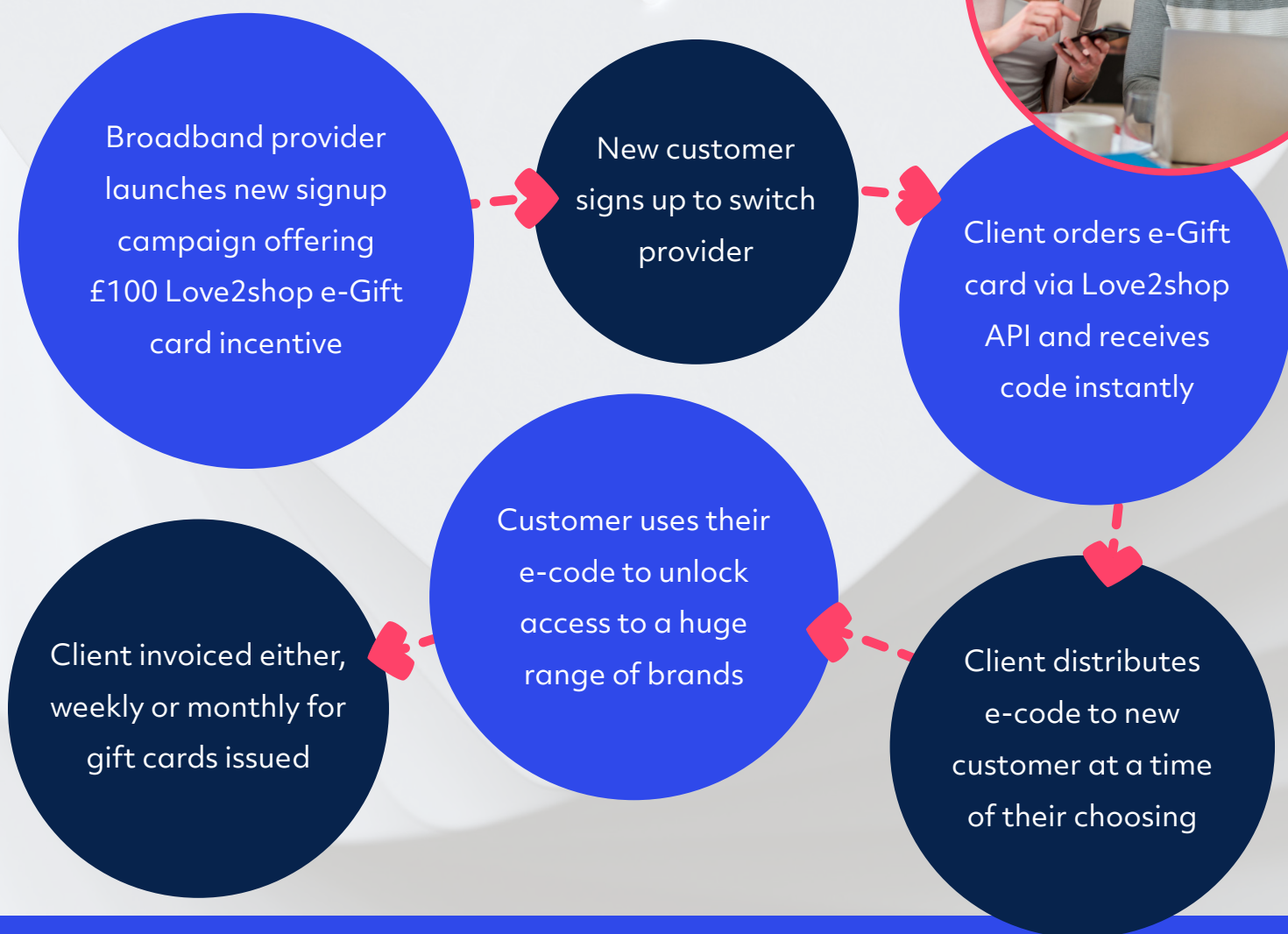


Create inbound enquiries



Improve engagement

Example scenario: New customer sign-up incentive



Onboarding Process

A straightforward process that can be completed in a matter of days following agreement of contractual terms.



Love2shop provide you with all the information you need to test and develop your systems with our API Sandbox and documentation.

API clients will be required to register for Self-Serve, our online ordering platform. This can be completed via a simple weblink.

We request that all API clients have a credit account facility to issue real-time rewards.

We will provide ongoing support to assist with any set-up or development queries.



Start ordering!



Ready to integrate?

Let's start a conversation...



Speak to our team to discover how API integration can open up a world of real-time rewards

LOVE2SHOP

Phone: **0330 333 1201**

Email: **hello@love2shop.co.uk**